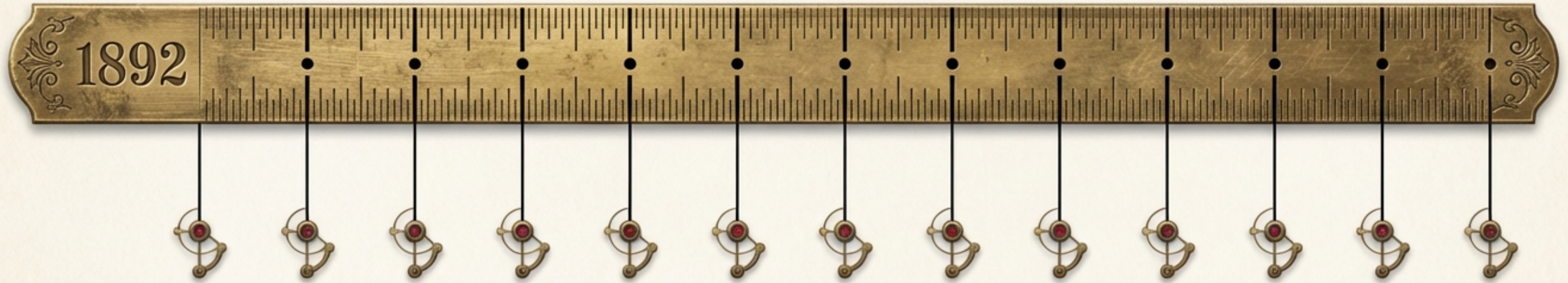


The Anatomy of a Mystery

Deconstructing the structural genius of Arthur Conan
Doyle's The Adventures of Sherlock Holmes

A Masterclass in Narrative Engineering

The Adventures of Sherlock Holmes does not just document 12 crimes; it establishes the unbreakable blueprints of the modern detective procedural.



This deck deconstructs the machinery of Holmes—from his cognitive frameworks to his categorization of crime—revealing how Doyle transformed the chaos of Victorian London into a perfectly solvable equation.

The Architecture of the Brain-Attic

Useless Facts
(Lumber-Room)

Useful Tools
(Filing System)



A man should keep his little brain-attic stocked with all the furniture that he is likely to use, and the rest he can put away in the lumber-room of his library... (The Five Orange Pips)

Moving from Sight to Observation

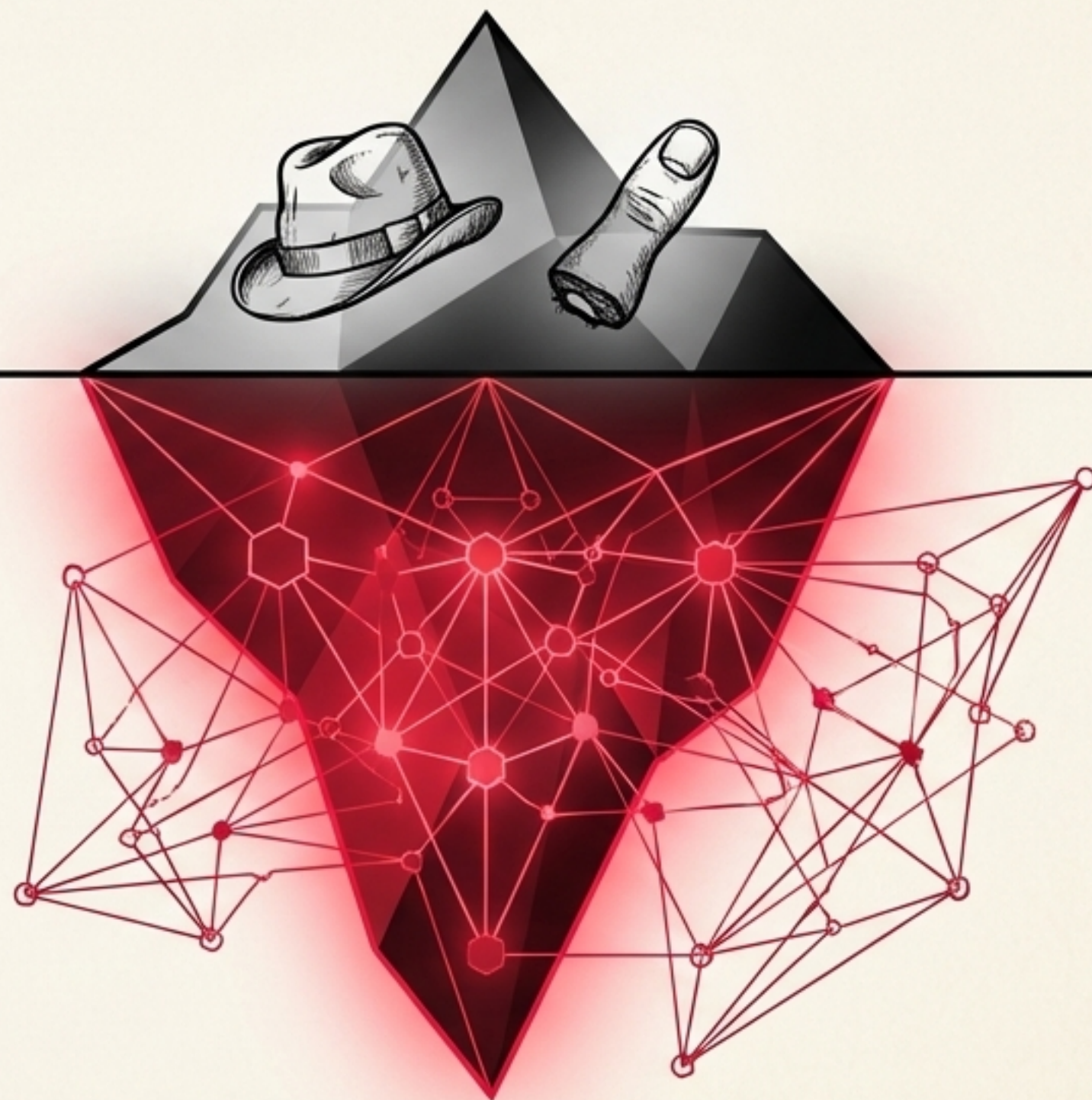
The average mind sees only the bald and vulgar surface.
The trained reasoner sees the invisible, interconnected
chain of cause and effect beneath.

What Watson Sees
The Platitudes of Existence
Ordinary, disconnected objects.

20%

80%

What Holmes Observes
The Vital Essence
The decline of a man's
fortunes, a murderous
counterfeiting ring.



It is a capital mistake to theorise before one has data.

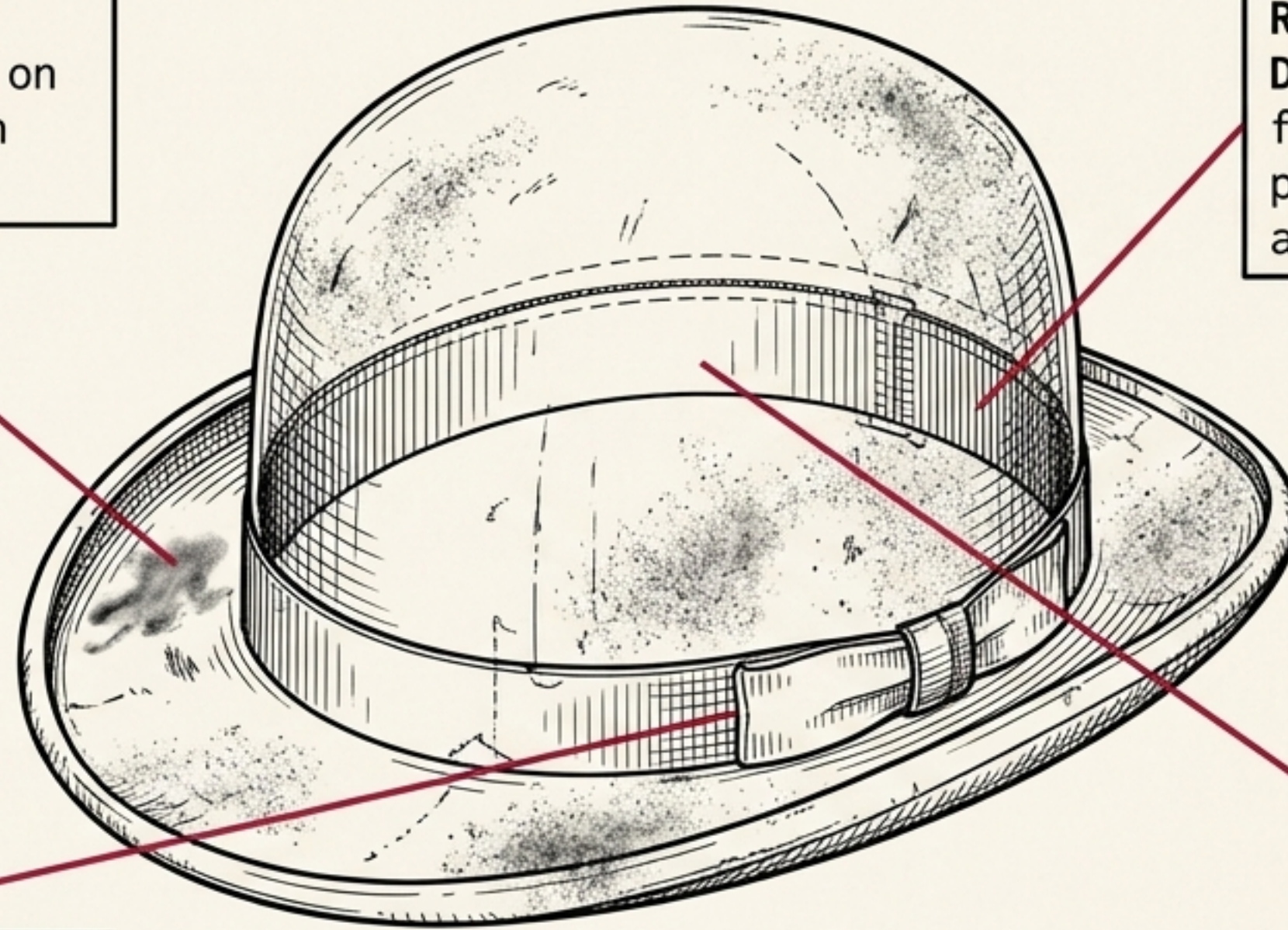
Data Synthesis in Action

Tallow Stains

Deduction: No gas laid on in his house; relies on candles.

Ribbed Silk Lining

Deduction: Decline in fortunes; could afford a premium hat three years ago, but none since.



Broken Hat-Securer Elastic

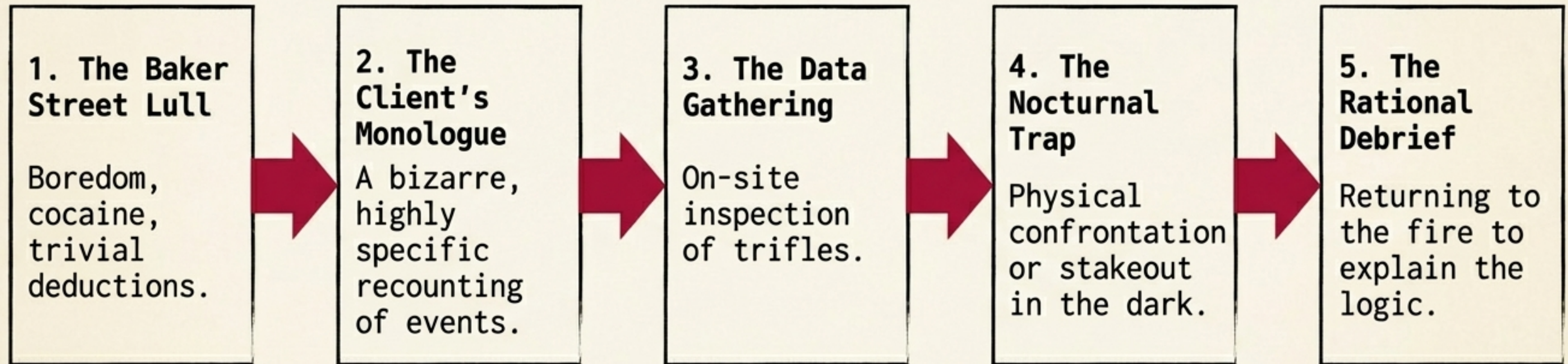
Deduction: Moral retrogression; loss of foresight.

Unbrushed Dust

Deduction: His wife has ceased to love him.

The Unbreakable Structural Pacing

Doyle standardizes the investigative rhythm, ensuring the audience is anchored by a familiar process even as the crimes become increasingly bizarre.



A Taxonomy of Victorian Transgressions

Holmes explicitly states that the strangest and most unique things are very often connected not with the larger but with the smaller crimes. The collection relies heavily on non-lethal, bizarre anomalies over simple murder.



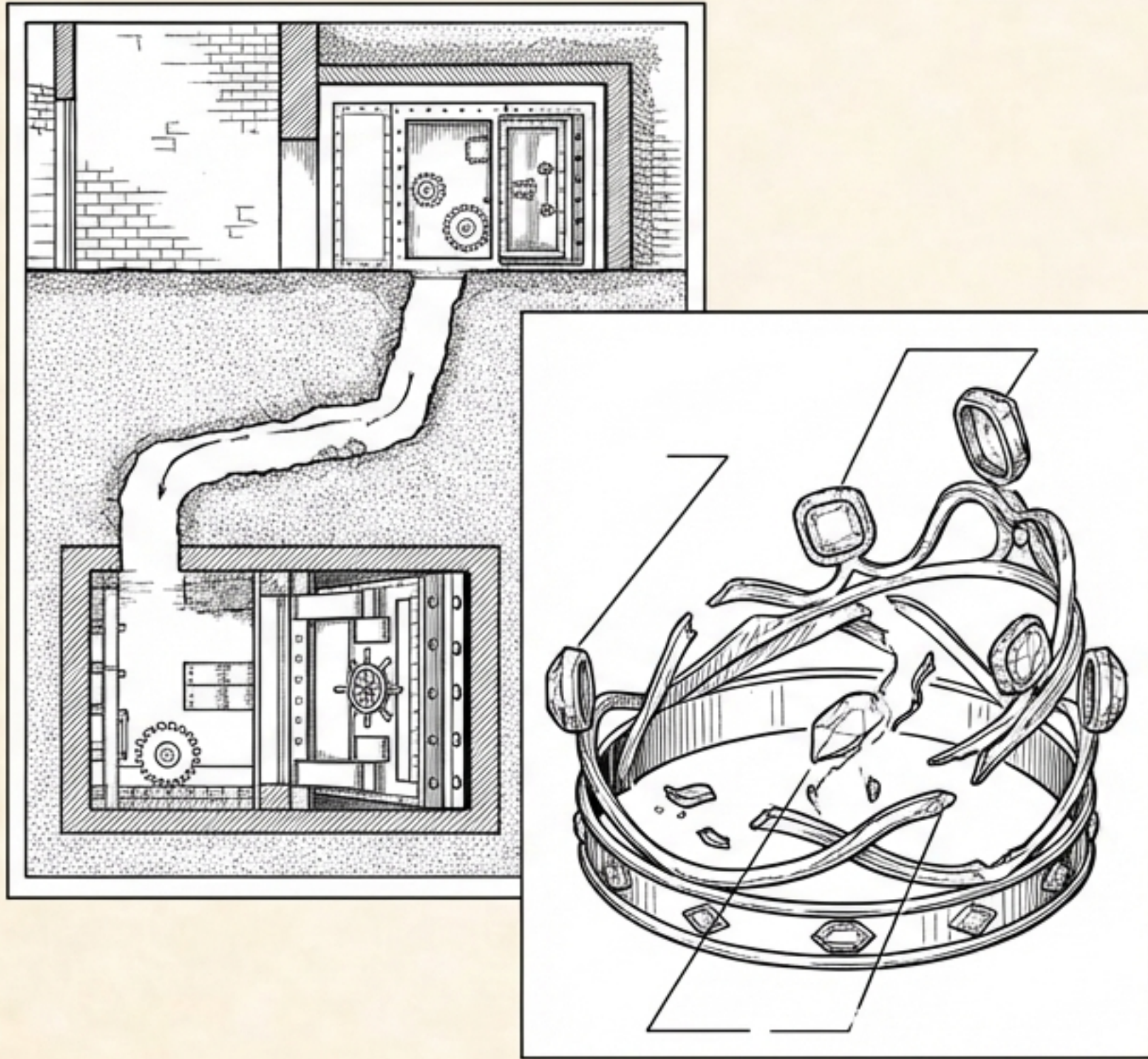
Taxonomy I: The Social Scandal



- A Scandal in Bohemia: The threat of a compromising photograph derailing royal matrimony.
- The Adventure of the Noble Bachelor: The inexplicable disappearance of an American bride from her wedding breakfast.

Insight: These cases prioritize reputation preservation over capital crime, requiring absolute discretion rather than official police involvement.

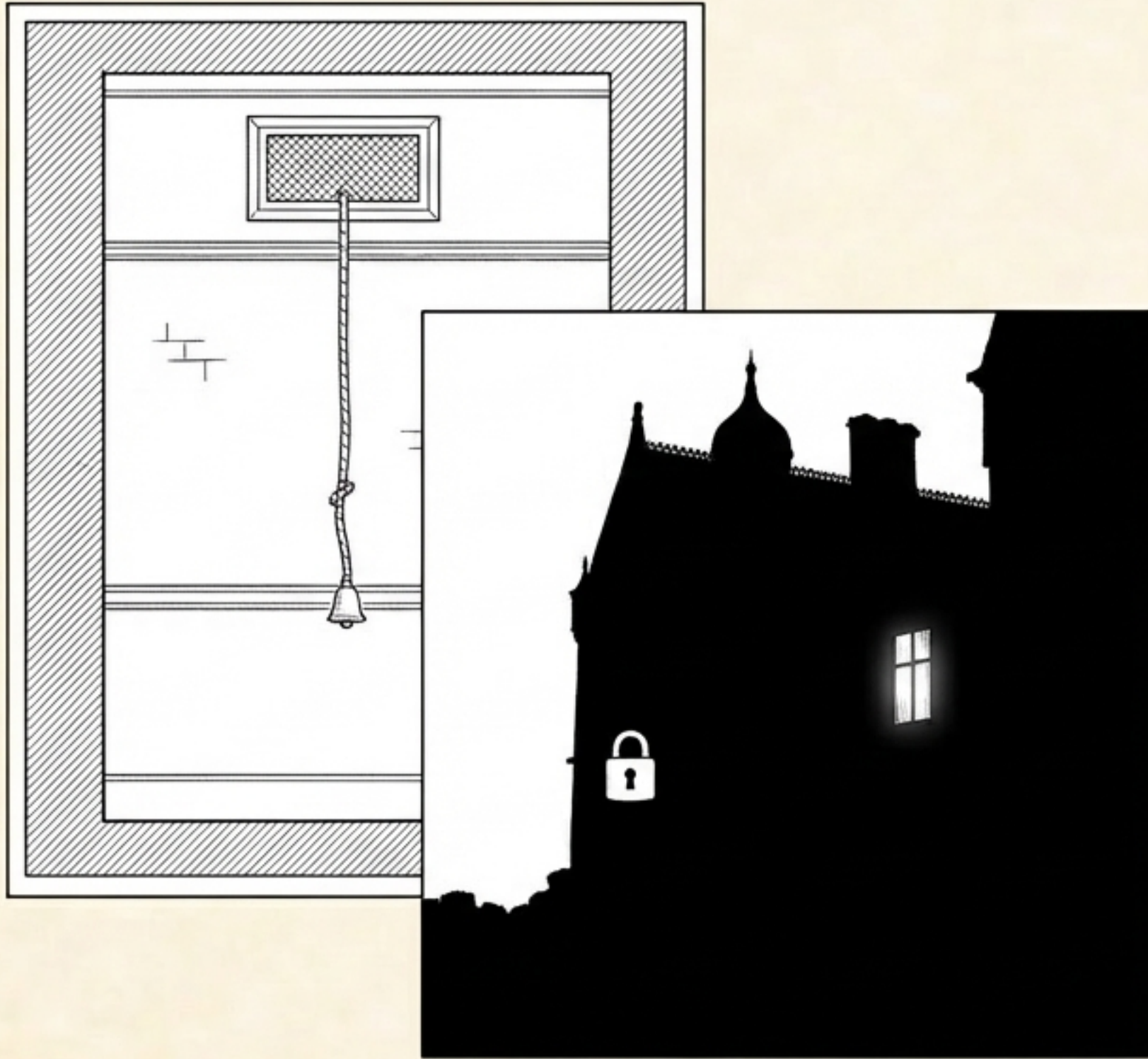
Taxonomy II: The Ingenious Heist



- **The Red-Headed League:** A spectacularly elaborate diversion invented solely to dig a tunnel into a bank vault.
- **The Adventure of the Beryl Coronet:** A frantic search for missing gems torn from a national treasure in the dead of night.

Insight: These antagonists are defined by their intellectual deception, forcing Holmes to out-think rather than out-fight them.

Taxonomy III: The Gothic Horror



- **The Adventure of the Speckled Band:** Midnight whistles, a dying twin's scream, and a murderous stepfather in a decaying manor.
- **The Adventure of the Copper Beeches:** A lucrative governess job with bizarre conditions: cutting one's hair and wearing specific dresses.

Insight: Doyle subverts supernatural tropes; the true monsters are merely greedy men using elaborate mechanics of terror.

Taxonomy IV: Tragic Vengeance

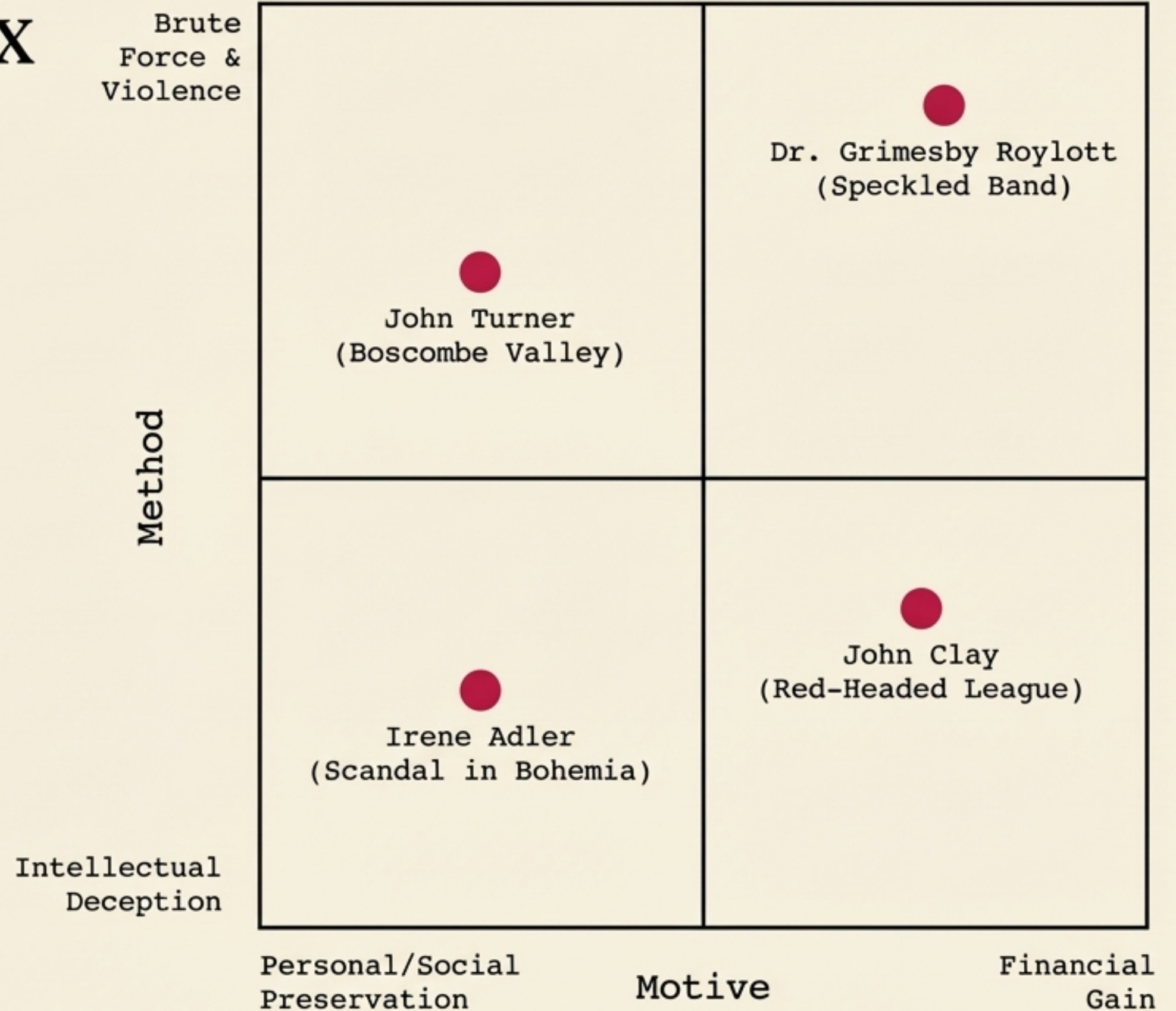


- The Boscombe Valley Mystery: A fatal strike by the Boscombe Pool rooted in dark secrets from the Ballarat goldfields.
- The Five Orange Pips: An inescapable, generational death sentence passed down by the K.K.K.

Insight: In these cases, the past violently invades the present. The motive is rarely money, but rather the settling of ancient, inescapable scores.

The Diagnostic Matrix of Antagonists

Doyle's villains are rarely one-dimensional. Mapping their motives against their methods reveals a striking balance between physical threat and intellectual rivalry.



Institutional Dogma vs. The Analytical Engine

Scotland Yard (Lestrade, Bradstreet, Jones)

- **Focus:** Obvious facts (a trout in the milk).
- **Method:** Dragging the Serpentine, physical arrests, standard search grids.
- **View of Bizarre:** Sees the unusual as an impenetrable roadblock.

The Analytical Engine (Holmes)

- **Focus:** The vital essence of trifles.
- **Method:** Tracing typewriter key slurs, measuring boot impressions, tracing newspaper ads.
- **View of Bizarre:** The more featureless and commonplace a crime is, the more difficult it is to bring it home. Singularity is almost invariably a clue.

The Private Scales of Extralegal Justice

Holmes does not view himself as an agent of the police, but as a final arbiter of balance. He frequently usurps the law to grant mercy when the legal system would only cause further destruction.



Evidence Points:

- **The Blue Carbuncle:** Lets the thief James Ryder flee to avoid making him a gaol-bird for life.
- **The Boscombe Valley Mystery:** Withholds John Turner's written confession to spare his daughter the shock of her father's crimes.

When the Machine Fails

The formula is powerful, but not omnipotent. Doyle brilliantly validates the danger of the world by allowing Holmes to arrive too late or be physically outmaneuvered.

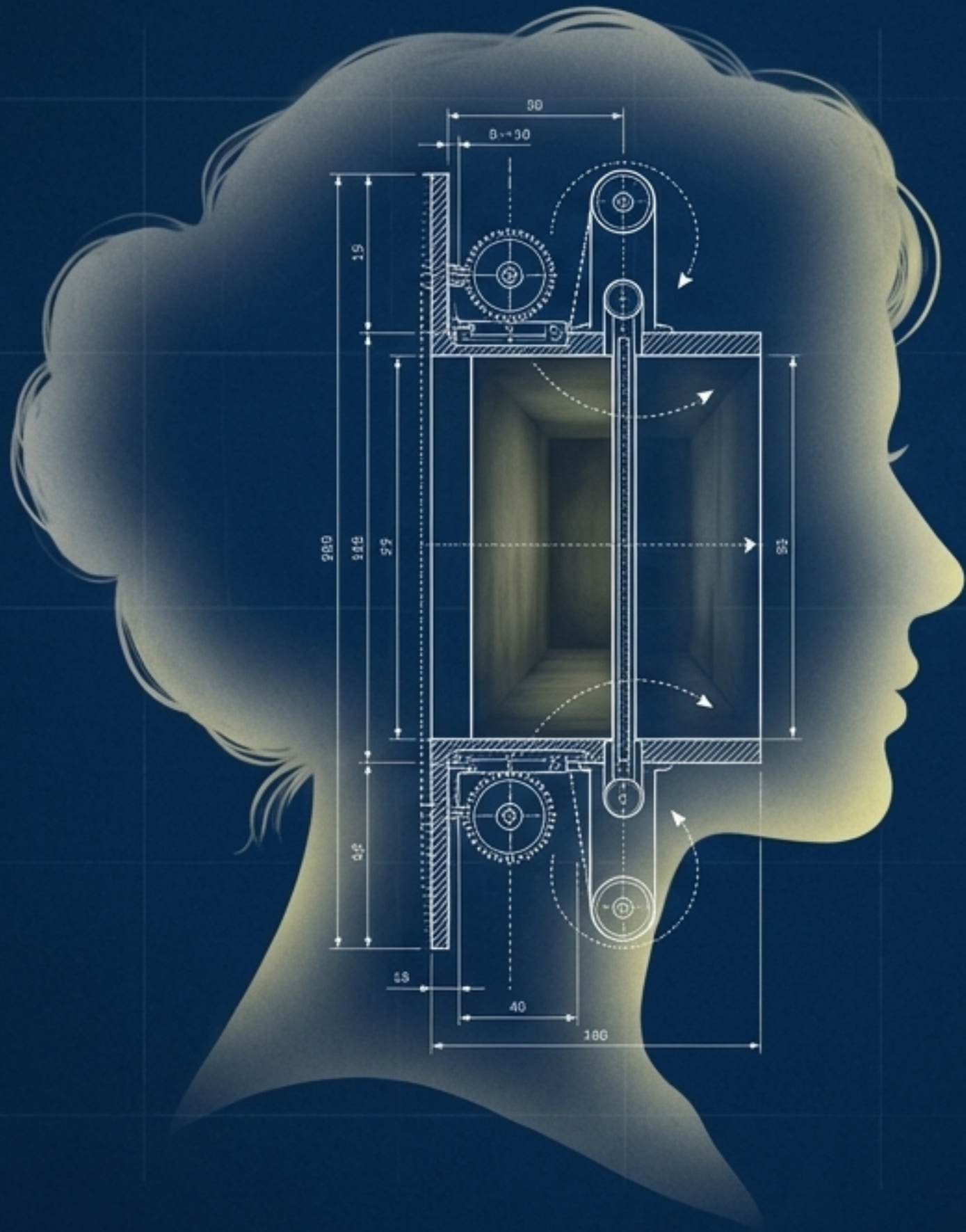
- The Five Orange Pips: Holmes fails to protect his client, John Openshaw, who is murdered on his way home.
- The Engineer's Thumb: The murderous counterfeiters successfully escape with their machinery before Holmes can trap them.

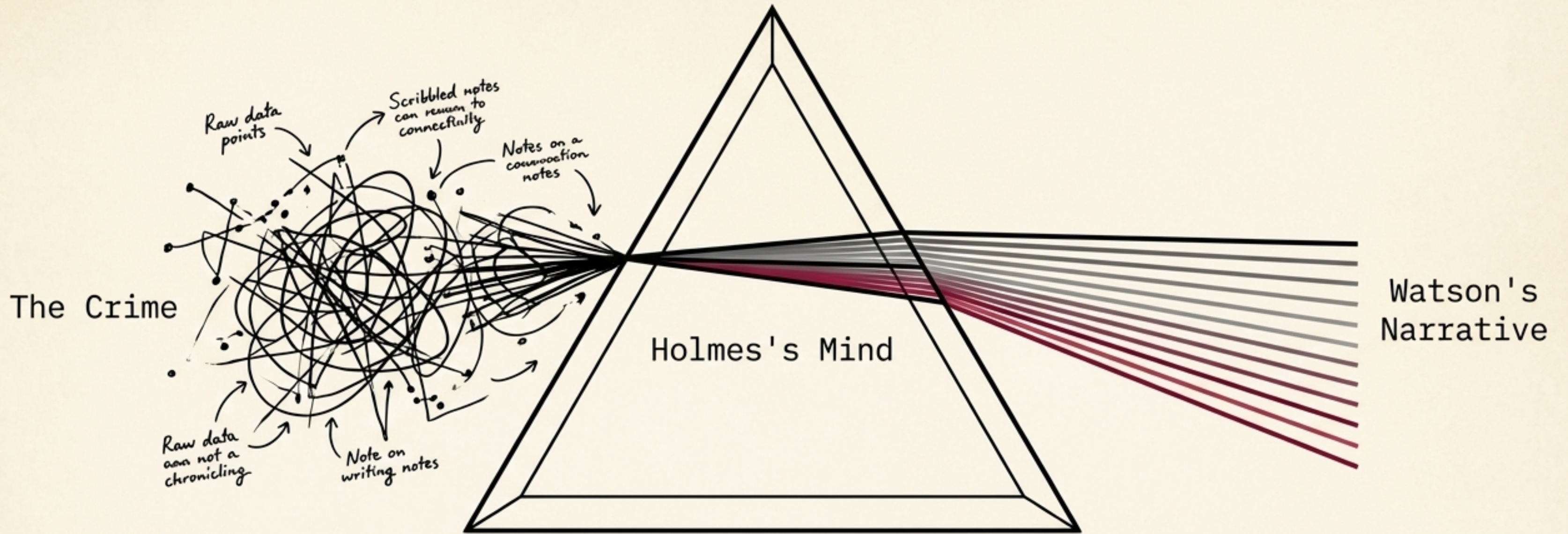


The Ultimate Anomaly: The Woman

Irene Adler (A Scandal in Bohemia) is the only subject to completely shatter Holmes's analytical engine. She anticipates his disguises, exploits his reliance on logic, and escapes flawlessly.

He used to make merry over the cleverness of women, but I have not heard him do it of late... she is always the woman.





The Watson Function: Translating Genius

Holmes is a cold, calculating machine. Watson is the crucial humanizing catalyst. Without Watson's embellishment and chronicling, Holmes's deductions would remain isolated, unpalatable data points. Watson is the lens through which absolute logic becomes literature.

Synthesis: The Rationalization of the Unknown

The ultimate appeal of *The Adventures of Sherlock Holmes* is not the shock of the crimes, but the profound comfort of the resolution.

In a rapidly industrializing Victorian world filled with strange global connections, chaotic cities, and creeping anxieties, Doyle offered a powerful antidote: The belief that no matter how bizarre or terrifying the modern world appears, it can be entirely mastered by human reason.





The Enduring **Architecture** of the Procedural

By building an infallible engine of deduction, Doyle didn't just write 12 popular stories. He drafted the foundational blueprint for every procedural narrative that followed—proving that logic, when applied with mastery, is the most compelling story of all.